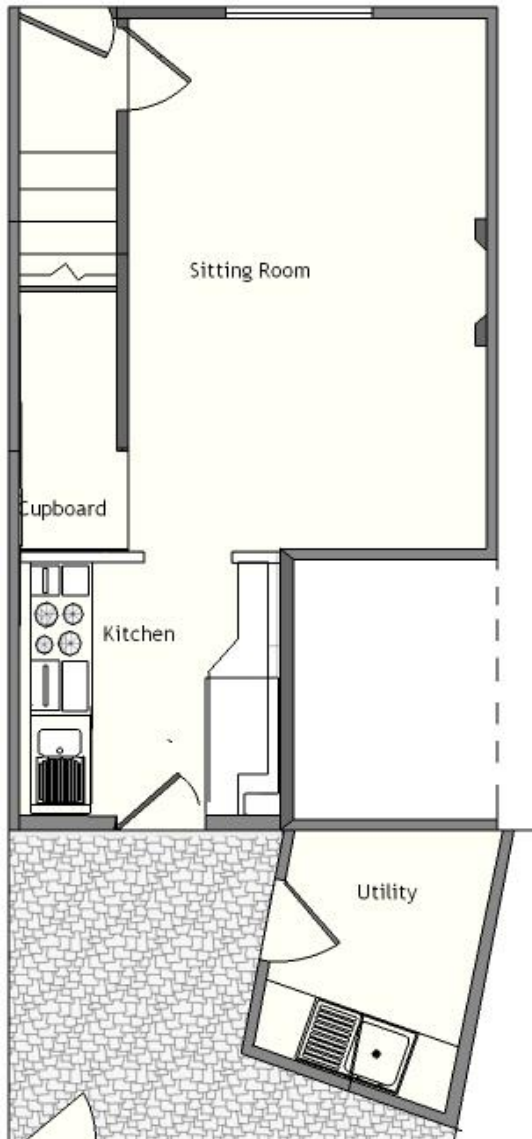


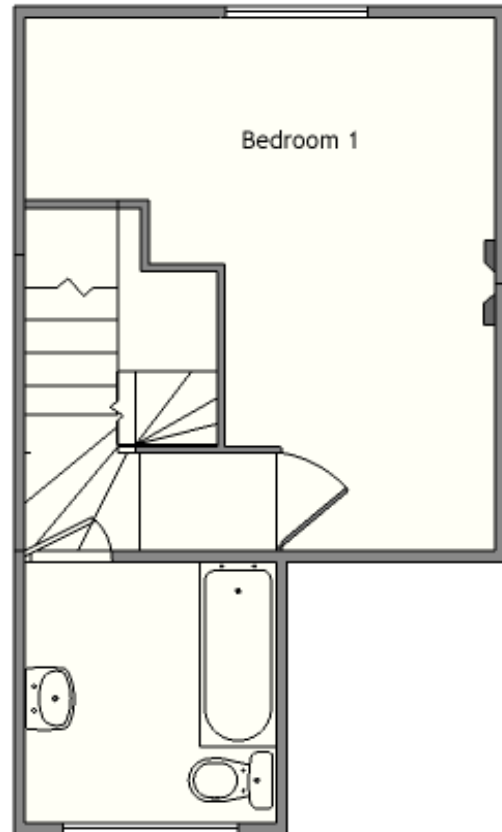
Olivers

FLOOR PLAN: 96 London Road, Halesworth

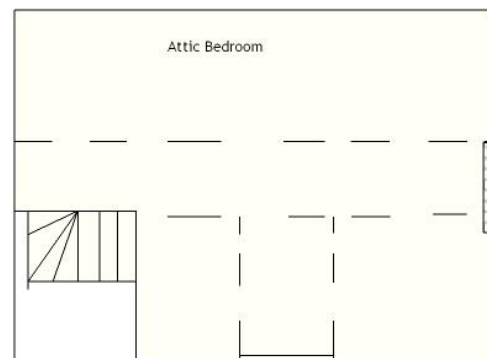
Ground floor:
Approx floor area: 30.96m²/ 101' 6" ft²



First floor:
Approx floor area: 26.4m²/ 86' 7" ft²



Second floor:
Approx floor area: 13.76 m²/ 45' 1" ft²



TOTAL: Approx floor area 71.12m²/ 233' 3 ft²

All information including prices, photographs, drawings and details contained in these particulars are issued in good faith and must only be used as a guide not forming part of any offer or contract. The Agent/Vendor/Landlord accepts no responsibility for misrepresentations: Prospective purchasers/tenants must themselves verify the statements contained and contact this office for clarification if required. All room measurements provided are approximate and must not be used for the purposes of ordering of carpets, furniture or any other materials, other measurements of particular interest should be independently verified. No service, equipment or appliance contained in this property has been tested; accordingly applicants are advised to commission their own survey/report prior to placing an offer.